



A beautifully presented 3 bedroom semi-detached home that is situated in the popular location of Clyst St. Mary. The house benefits from a lounge, a kitchen/dining room, a downstairs w/c, a bathroom, an en-suite, a landscaped rear garden and two parking spaces.

Entrance Hallway

Double glazed door to the front aspect, stairs to the first floor and a radiator. Doors to,

W/C

A low-level w/c, a wash hand basin, radiator and a double-glazed window to the front aspect.

Lounge

Double glazed bay window to the front aspect, radiator, and carpet flooring

Kitchen/Dining room

A range of matching floor and wall mounted units with a roll top worktop and drawer units, inset sink, integral oven, inset hob, space for fridge/freezer, built in dishwasher, washing machine. Breakfast bar, space for dining table, radiator, tiled floor, double glazed French doors and window to the rear aspect,

First Floor Landing

Stairs leading back to ground floor, banister over stairs, carpet flooring and doors to.

Bedroom 1

Double glazed window to the front aspect, radiator, carpet flooring and a door to,

En-suite

A walk-in shower, a low-level w/c, a wash hand basin and a radiator.

Bedroom 2

Double glazed window to the rear aspect, radiator, and carpet flooring.

Bedroom 3

Double glazed window to the front aspect, radiator and carpet flooring.





Family Bathroom

A panel bath, a low-level w/c, a wash hand basin, and a double-glazed window to the rear aspect.

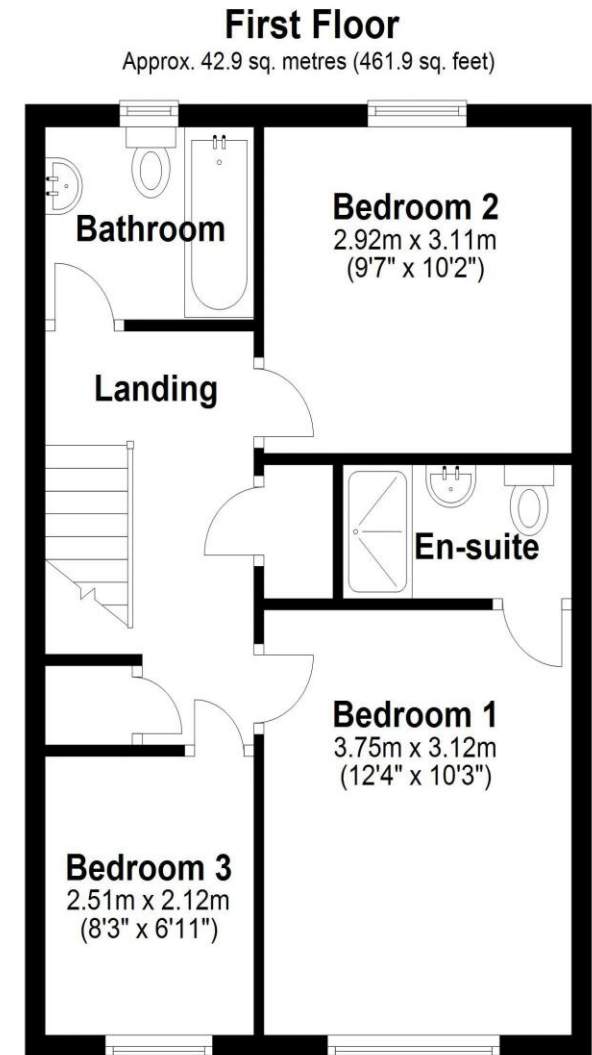
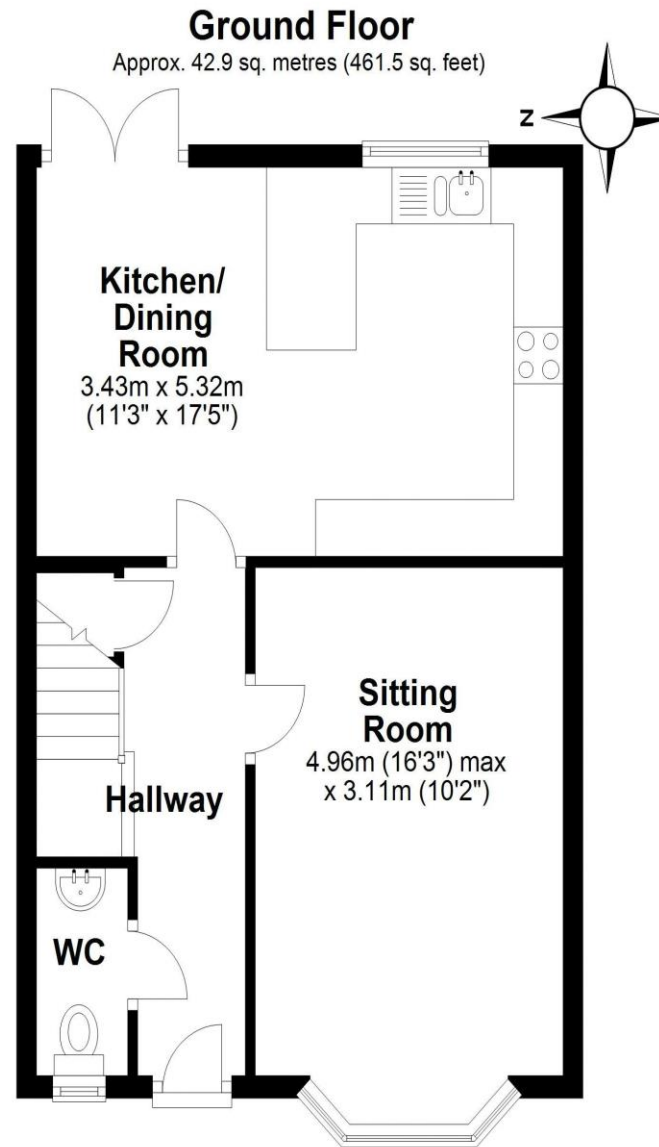
Outside

To the front of the house there is a driveway with parking for two cars and a path leading to the front door. To the rear of the property there is a landscaped rear garden, there is a side gate and a timber shed.



Agent notes

These particulars are not an offer or contract, nor part of one. You should not rely on statements by Francis Louis in the particulars or by word of mouth or in writing ("information") as being factually accurate about the property condition or its value. Neither Francis Louis nor any joint agent has any authority to make any representations about the property and accordingly any information given is entirely without responsibility on the part of the agents, sellor(s) or lessor(s) Photos etc: The photographs show only certain parts of the property as they appeared at the time they were taken. Areas, measurements and distances given are approximate only. Regulations etc: Any reference to alterations to, or use of, any part of the property does not mean that any necessary planning, building regulations or other consent has been obtained. A buyer or lessee must find out by inspection or in other ways that these matters have been properly dealt with and that all information is correct. VAT: the vat position relating to the property may change without notice.



Total area: approx. 85.8 sq. metres (923.3 sq. feet)

Francis Louis (Exeter) Limited Office
Tel: 01392243077

Francis Louis House Belmont Road Exeter Devon EX1 2HF
james@francisloUIS.co.uk
www.francisloUIS.co.uk